

## Product Information

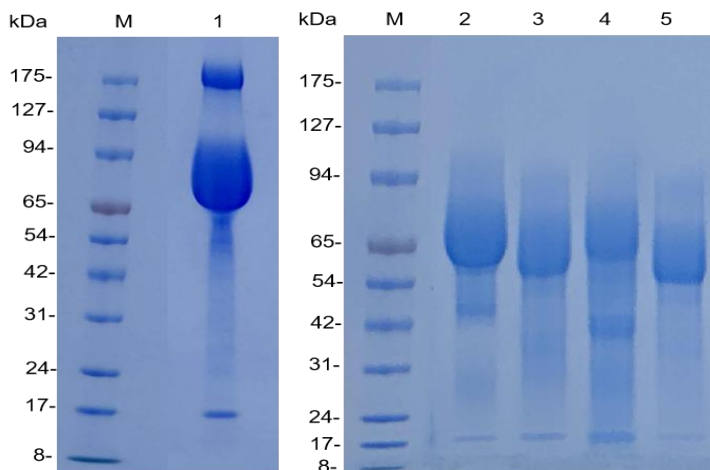
<b>Name</b>	tau (non-phosphorylation) antigen isomer set		
<b>Catalog #</b>	2035NI		
<b>Species</b>	Human		
<b>Product Description</b>	Recombinant protein produced by <i>in vitro</i> mammalian cell culture free from animal-derived components		
<b>NCBI Ref. Seq. No.</b>	Tau-B (1N3R)	P10636-4	381aa.
	Tau-C (2N3R)	P10636-5	410aa.
	Tau-D (0N4R)	P10636-6	383aa.
	Tau-E (1N4R)	P10636-7	412aa.
	Fetal-Tau (0N3R)	P10636-2	352aa.
<b>Expression Fragment</b>	Full length		
<b>AA. Residues No.</b>	isomer-specific		
<b>Predicted MW</b>	isomer-specific		
<b>Actual MW</b>	isomer-specific		
<b>Modification</b>	None		
<b>Tag</b>	A his and a pro-stability tag		
<b>Solution</b>	Referred to CoA		
<b>Appearance</b>	Clear, transparent liquid, colorless or slightly yellow		
<b>Storage</b>	2-8°C for 3 days, -20°C for long-term storage, avoid multiple freeze-thaw cycles		
<b>Purity</b>	>80%		
<b>Concentration</b>	Referred to CoA		
<b>Lot #</b>	_____		
<b>References</b>			

## User Guide

**Catalog #**                      2035NI  
**Lot #**                              \_\_\_\_\_

### Purity

>80%, The purity of the product is determined by SDS-PAGE visualized with coomassie blue.



Lane-1: Tau-B(with a his and a pro-stability tag,~17kd)  
 Lane-2: Tau-C  
 Lane-3: Tau-D  
 Lane-4: Tau-E  
 Lane-5: Fetal-tau

**HKIG™ All Rights Reserved**